



10 BRONTE ST. S. #101  
MILTON ON L9T 1Y8

| TEAM                                       | CONTACT           |                        |
|--|-------------------|------------------------|
| CLIENT                                     |                   |                        |
| DESIGNERS                                  | FSH DESIGN INC    | NICK GODDARD           |
| STRUCTURAL                                 | X                 |                        |
| MECHANICAL                                 | RISER ENGINEERING | TOMMY MUJ 647-409-1832 |
| ELECTRICAL                                 | RISER ENGINEERING | TOMMY MUJ 647-409-1832 |
| PLUMBING                                   | RISER ENGINEERING | TOMMY MUJ 647-409-1832 |
| EQUIPMENT                                  |                   |                        |
| SCREENS (supply & install)                 |                   |                        |
| CAMERAS & CABLING (supply/install, wiring) |                   |                        |
| POS  |                   |                        |

| DRAWING LIST |   |
|--------------|---|
| SHEET        | DRAWING NAME                                    |
| A000         | EQUIPMENT LIST / LEGENDS / SITE PLAN            |
| A100         | REFLECTED CEILING PLAN<br>NEW CONSTRUCTION PLAN |
| A101         | FINISH PLAN<br>EQUIPMENT PLAN                   |
| A200         | ELEVATIONS                                      |
| A201         | ELEVATIONS                                      |
| I202         | ELEVATIONS                                      |
| A300         | DETAILS   |

| NOTES |   |
|-------|---|
| 1.    | ALL WORK SHOULD CONFORM TO ALL APPLICABLE PROVINCIAL AND MUNICIPAL CODES AND BYLAWS.  |
| 2.    | THE DRAWINGS ARE ISSUED FOR DESIGN INTENT ONLY. THE CONTRACTOR MUST REVIEW THE APPROVED BUILDING PERMIT DRAWINGS AND ADVISE DESIGNERS FOR ANY DISCREPANCIES BEFORE CONSTRUCTION.  |
| 3.    | CONTRACTORS AND SUBCONTRACTORS SHALL REVIEW, EXAMINE AND BE FAMILIAR WITH ALL COMPONENTS OF THE PROJECT SHOWN ON THE DRAWINGS AND INDICATED ON THE SPECIFICATIONS.  |
| 4.    | CONTRACTOR AND SUBCONTRACTORS MUST VERIFY ALL MEASUREMENTS ON SITE AND ASSESS ITS EXISTING CONDITION. CONTRACTOR TO INFORM CONSULTANTS FOR ANY DISCREPANCIES BEFORE ORDERING MATERIALS AND COMMENCING WORK.   |
| 5.    | INTERIOR DIMENSIONS ARE TO FACE OF FINISHED WALLS UNLESS OTHERWISE NOTED.   |
| 6.    | ALL MATERIALS, EQUIPMENT, AND FIXTURES SHALL BE INSTALLED ACCORDING TO THE MANUFACTURER'S SPECIFICATIONS AND RECOMMENDATIONS.   |
| 7.    | CONTRACTOR TO COORDINATE PLUMBING, ELECTRICAL, AND DATA CONNECTIONS WITH CLIENT-SUPPLIED EQUIPMENT AS REQUIRED.   |
| 8.    | REFER TO ELECTRICAL ENGINEER'S DRAWINGS FOR EXIT SIGNS, EMERGENCY LIGHTING, AND FIRE ALARM DEVICES.   |
| 9.    | PULL STATION AND FIRE ALARM SYSTEMS TO REMAIN. EMERGENCY EXIT LIGHTING, EXIT SIGNS, DIRECTIONAL EXIT SIGNS, AND FIRE ALARM GONGS, ETC. MAY BE REQUIRED. CONFIRM FINAL LOCATIONS AND QUANTITIES ON SITE WITH BUILDING INSPECTOR AND FIRE DEPARTMENT. |
| 10.   | CONTRACTOR IS RESPONSIBLE TO PROVIDE ADEQUATE PROTECTION TO PREVENT DAMAGES TO EXISTING AND/OR NEW MATERIALS OR PREVIOUS CONSTRUCTION. IN THE EVENT OF ANY DAMAGE, THE CONTRACTOR IS RESPONSIBLE TO MAKE GOOD ANY REPAIRS AT NO ADDITIONAL COST.    |
| 11.   | CONTRACTOR TO ENSURE ALL REQUIRED BLOCKING, BRACING, FRAMING, HANGERS OR OTHER SUPPORT FOR MATERIALS AND FIXTURES AND EQUIPMENT ARE PROVIDED AS MAY BE REQUIRED WHETHER OR NOT DETAILS HAVE BEEN SHOWN ON THE DRAWINGS.                             |
| 12.   | CONTRACTOR TO PROVIDE SHOP DRAWINGS FOR, BUT NOT LIMITED TO MILLWORK, STONE COUNTERTOP, GLASS SNEEZE GUARDS ETC.  |

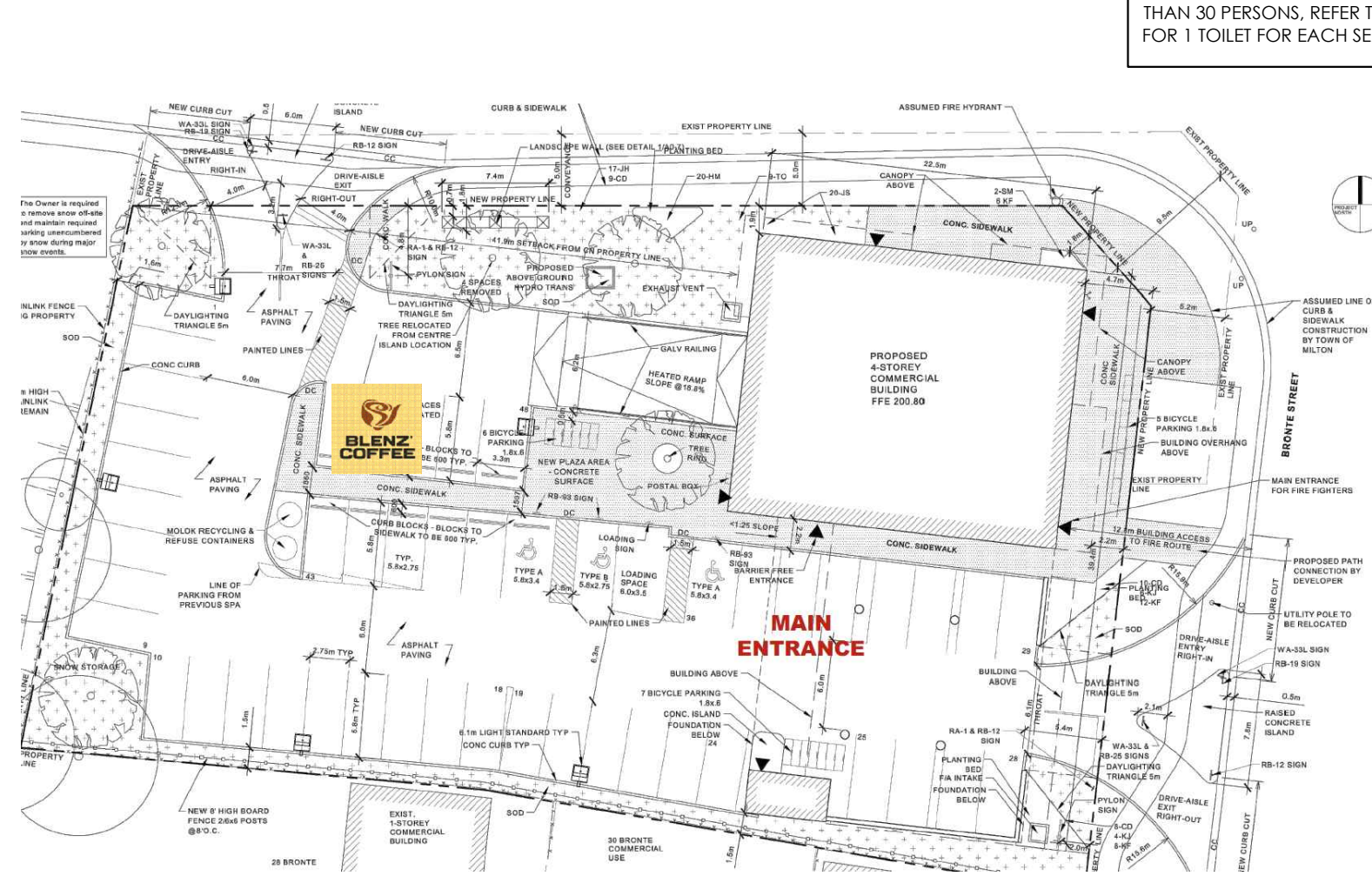
| MILLWORK SCHEDULE   |  |         |   |
|---|--|---------|---|
| ALL MILLWORK TO HAVE SHOP DRAWINGS SUBMITTED TO DESIGNER FOR REVIEW AND APPROVAL PRIOR TO FABRICATION.<br>* DRYWALL CONTRACTOR TO PROVIDE BACKING AS REQUIRED TO SUIT MILLWORK INSTALLATIONS.<br>* SEE PAGE A300 FOR DETAILS OF MILLWORK. |  |         |   |
| SYMBOL:   | DESCRIPTION:   | SYMBOL: | DESCRIPTION:  |
| (M1)  | MILLWORK: COFFEE BAR<br>FINISH: L1, T2 & S1<br>HARDWARE: MH1, MH2, MH4 | (M3)    | MILLWORK: DISPOSAL & SELF SERVE STATION<br>FINISH: L1 & S1<br>HARDWARE: MH1, MH2, MH4 |
| (M2)  | MILLWORK: POWER BAR<br>FINISH: L1<br>HARDWARE: MH3                     | (M4)    | MILLWORK: PRODUCT DISPLAY SHELVING<br>FINISH: L1<br>HARDWARE: MH1, MH2, MH4           |

| WASHROOMS, SINKS, EQUIPMENT |  |         |   |
|-----------------------------|--|---------|---|
| SYMBOL:                     | DESCRIPTION:   | SYMBOL: | DESCRIPTION:  |
| PB1                         | TYPE: TOILET<br>MANUFACTURER: KOHLER<br>PRODUCT: K-3153P-0 WALL HUNG COMPACT ELONGATED SEAT TO MATCH<br>COLOR/FINISH: WHITE                      | E18A    | TYPE: HAND SINK<br>MANUFACTURER: KREDEE<br>ITEM #: GSUA181A-8 UNDERMOUNT<br>COLOR/FINISH: STAINLESS STEEL   |
| PB3                         | TYPE: FAUCET<br>MANUFACTURER: MOEN<br>PRODUCT: 6715 VICHY SINGLE HOLE MOUNT<br>COLOR/FINISH: CHROME  | E18B    | TYPE: FAUCET<br>MANUFACTURER: MOEN<br>ITEM #: 726V5S BELFIELD SMART KITCHEN ONE HANDLE ARC<br>COLOR/FINISH: BRUSHED NICKEL<br>TOP MOUNT ONE HOLE              |
| PB4                         | TYPE: MOP SINK<br>MANUFACTURER: DURAVIT<br>PRODUCT: 070225 VERO WALL MOUNTED SINK<br>COLOR/FINISH: WHITE   | E19     | TYPE: MOP SINK<br>MANUFACTURER: ULINE<br>ITEM #: H-527-2424X10<br>COLOR/FINISH: WHITE<br>OR EQUAL   |
| E6                          | TYPE: PITCHER RINSER<br>MANUFACTURER: RHINO COFFEE GEAR<br>PRODUCT: RHPK300-S MOUNTED ON COUNTER 14"x9"<br>REQUIRES 1" DRAIN HOSE (NOT INCLUDED) | E20     | TYPE: MOP SINK FAUCET<br>MANUFACTURER: AMERICAN STANDARD<br>ITEM #: 8344212.004 TOP BRACE WALL MOUNT SERVICE FAUCET<br>COLOR/FINISH: ROUGH CHROME<br>OR EQUAL |

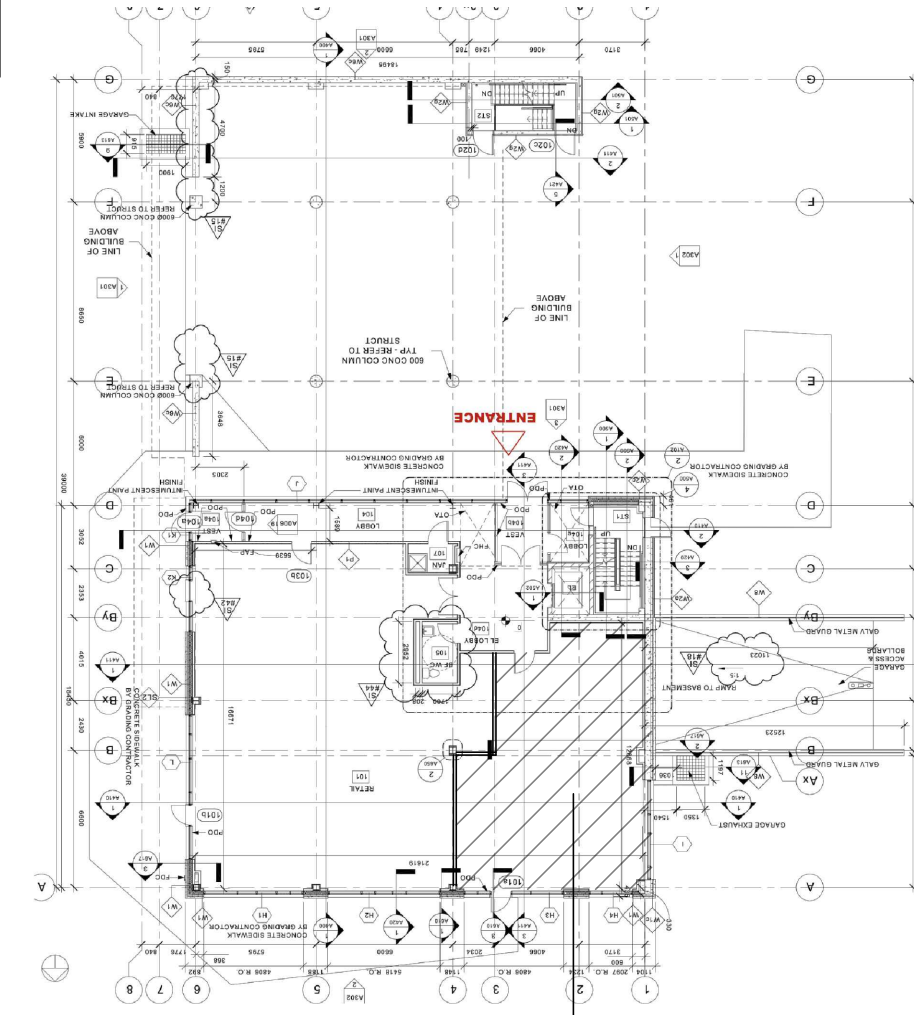
| CODE REQUIREMENTS   |
|---|
| 1. MINIMUM NUMBER OF EXITS PROVIDED AS PER OBC ARTICLE 3.4.2.1 (EXISTING CONFORMS)  |
| 2. LOCATION OF EXITS AND TRAVEL DISTANCE TO EXITS AS PER OBC ARTICLE 3.4.2.5 (EXISTING CONFORMS)  |
| 3. EXIT CAPACITY AS PER OBC ARTICLE 3.4.3.2 (EXISTING CONFORMS)   |
| 4. MINIMUM 1100mm CLEAR WIDTH TO PATH LEADING TO EXIT AS PER SUBSECTION 3.4.3   |
| 5. PATH OF TRAVEL LEADING TO DESIGNATED EXIT SHALL BE KEPT FREE OF ANY OBSTACLES AT ALL TIMES   |
| 7. THE MAXIMUM FLAME SPREAD RATING FOR WALL SURFACES SHALL BE 150 CONFORMING TO OBC SUBSECTION 3.1.13   |
| 9. DOORS AND DOORWAY SHALL BE IN COMPLIANCE WITH SENTENCES 3.8.3.3 (1) & (5)  |
| 10. SANITARY FACILITIES ARE BASED ON A CAPACITY OF 20 PERSONS:<br>CODE REQUIREMENT 3.7.4.8(4) FOR RESTAURANTS CLASSIFIED AS MERCANTILE OCCUPANCIES - QUANTITY OF TOILETS SHALL CONFORM TO ARTICLE 3.7.4.3<br>RESTAURANTS WITH AN OCCUPANT LOAD NOT MORE THAN 30 PERSONS, REFER TO TABLE 3.7.4.3(g) ALLOWS FOR 1 TOILET FOR EACH SEX |

| SITE STATISTICS   |
|---|
| MAJOR OCCUPANCY: GROUP E, MERCANTILE, NO CHANGE FROM PREVIOUS OCCUPANCY.<br>OCCUPANT LOAD: 20 PERSONS<br>BUILDING CLASSIFICATION: OBC PART 3<br>NUMBER OF STORES: ABOVE GRADE 4, BELOW GRADE 1<br>TOTAL UNIT AREA - 97m <sup>2</sup><br>BARRIER FREE DESIGN - YES<br>HAZARDOUS SUBSTANCES - NO<br>REQUIRED FR - EXISTING TO REMAIN<br>ALL ZONING PROVISIONS ARE EXISTING AND NOT CHANGING |

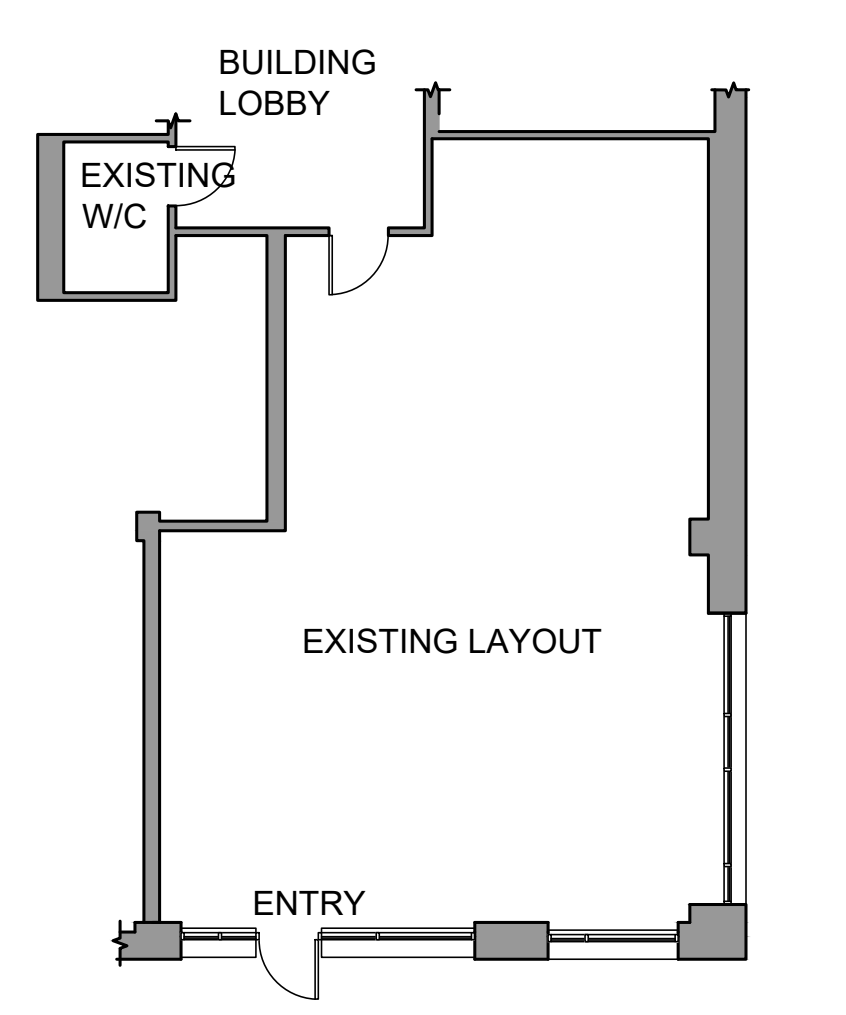
| LEGEND  |     |  |  |
|---------|-----|--|--|
| ITEM NO | QTY | DESCRIPTION                              | SUPPLY & INSTALL                           |
| E1      | 1   | SLIDING DOOR REFRIGERATOR                | BLENZ COFFEE                               |
| E2      | 1   | REACH IN FREEZER                         | BLENZ COFFEE                               |
| E3      | 1   | UNDER COUNTER SINGLE DOOR FREEZER        | BLENZ COFFEE                               |
| E4      | 1   | UNDER COUNTER DOUBLE DOOR REFRIGERATOR   | BLENZ COFFEE                               |
| E5      | 1   | UNDER COUNTER ICE MACHINE                | BLENZ COFFEE                               |
| E6      | 1   | PITCHER/GLASS RINSER                     | BLENZ COFFEE                               |
| E7      | 1   | UNDER COUNTER SINGLE DOOR REFRIGERATOR   | BLENZ COFFEE                               |
| E8      | 1   | OPEN AIR BEVERAGE COOLER                 | BLENZ COFFEE                               |
| E9      | 1   | DECAF ESPRESSO GRINDER                   | BLENZ COFFEE                               |
| E10     | 1   | MYTHOS CLIMA PRO GRINDER                 | BLENZ COFFEE                               |
| E11     | 2   | SATELLITES                               | BLENZ COFFEE                               |
| E12     | 1   | NITRO BREW                               | BLENZ COFFEE                               |
| E13     | 1   | G1 GRINDER                               | BLENZ COFFEE                               |
| E14     | 1   | BREW WISE                                | BLENZ COFFEE                               |
| E15     | 1   | MICROWAVE                                | BLENZ COFFEE                               |
| E16     | 1   | PANINI GRILL                             | BLENZ COFFEE                               |
| E17     | 1   | ESPRESSO MACHINE                         | BLENZ COFFEE                               |
| E18     | 1   | HAND SINK WITH FAUCET                    | PLUMBING TRADE TO SUPPLY AND INSTALL       |
| E19     | 1   | MOP SINK                                 | PLUMBING TRADE TO SUPPLY AND INSTALL       |
| E20     | 1   | MOP SINK FAUCET                          | PLUMBING TRADE TO SUPPLY AND INSTALL       |
| E21     | 1   | SINK SPRAY FAUCET (FOR DOUBLE SINK)      | PLUMBING TRADE TO SUPPLY AND INSTALL       |
| E22     | 1   | DOUBLE COMPARTMENT SINK                  | PLUMBING TRADE TO SUPPLY AND INSTALL       |
| E23     | 2   | WIRE SHELVING UNIT                       | BLENZ COFFEE                               |
| E24     | 1   | PASTRY CASE (CUSTOM GLASS)               | BLENZ COFFEE                               |
| E25     | 1   | BUMP SCREEN                              | BLENZ COFFEE                               |
| E26     | 1   | POINT OF SALES                           | BLENZ COFFEE                               |
| E27     | 1   | FOOD/DRINK PRINTER                       | BLENZ COFFEE                               |
| E28     | 0   | IPAD                                     | BLENZ COFFEE                               |
| E29     | 1   | KNOCK CHUTE W/ SLIM JIM U/C              | BLENZ TO SUPPLY, GC TO INSTALL             |
| E30     | 1   | WATER FILTER STATION (ABOVE DOUBLE SINK) | BLENZ TO SUPPLY, PLUMBING TRADE TO INSTALL |
| E31     | 2   | CUP DISPENSERS (SET OF 3)                | GC TO SUPPLY AND INSTALL                   |
| E32     | 4   | TVS & MOUNTS                             | BLENZ COFFEE TO SUPPLY, GC TO INSTALL      |
| E33     | 4   | SLIM JIM GARBAGE CAN BELOW               | BLENZ COFFEE                               |
| E34     | 1   | TILEABLE VENT                            | GC TO SUPPLY                               |
| E35     | 2   | SMALL WIRE SHELVING UNIT                 | BLENZ COFFEE                               |
| E36     | 1   | U/C DISHWASHER                           | BLENZ TO SUPPLY, PLUMBING TRADE TO INSTALL |
| E37     | 1   | GREASE TRAP                              | BLENZ COFFEE / LANDLORD                    |
| E38     | 2   | BLENDERS                                 | BLENZ COFFEE                               |
| WA1     | 1   | MIRROR                                   | GC TO SUPPLY AND INSTALL                   |
| WA2     | 1   | COAT HOOK                                | GC TO SUPPLY AND INSTALL                   |
| WA3     | 1   | GARBAGE CAN                              | GC TO SUPPLY AND INSTALL                   |
| WA5     | 0   | GRAB BARS                                | GC TO SUPPLY AND INSTALL                   |
| WA4     | 1   | SOAP DISPENSER                           | GC TO SUPPLY AND INSTALL                   |
| WA6     | 1   | PAPER TOWEL DISPENSER                    | GC TO SUPPLY AND INSTALL                   |
| WA7     | 1   | TOILET PAPER DISPENSER                   | GC TO SUPPLY AND INSTALL                   |
| MH3     | 4   | UNDER COUNTER BAG HOOK                   | GC TO SUPPLY AND INSTALL                   |
| F1      | 16  | OAK DINING CHAIR                         | BLENZ COFFEE                               |
| F2      | 0   | RED-BROWN DINING CHAIR                   | BLENZ COFFEE                               |
| F3      | 4   | CONTRACT GRADE TABLE TOPS                | BLENZ COFFEE                               |
| F4      | 4   | TABLE HEIGHT BASE                        | BLENZ COFFEE                               |
| F5      | 2   | ACCENT CHAIR                             | BLENZ COFFEE                               |
| F6      | 1   | COFFEE TABLE                             | BLENZ COFFEE                               |
| F7      | 1   | LOVESEAT                                 | BLENZ COFFEE                               |
| F8      | 1   | COMMUNAL TABLE                           | BLENZ COFFEE                               |
| F9      | 8   | BAR HEIGHT STOOLS                        | BLENZ COFFEE                               |
| F10     | 5   | BAR HEIGHT BOLT DOWN TABLE BASE          | BLENZ COFFEE                               |
| F11     | TBD | PATIO CHAIR                              | BLENZ COFFEE                               |
| F12     | TBD | PATIO TABLE                              | BLENZ COFFEE                               |
| F13     | 1   | PLANTER                                  | BLENZ COFFEE                               |
| F14     | 4   | ARTWORK PRINT                            | BLENZ COFFEE                               |
| PB1     |     | TOILET                                   | PLUMBING TRADE TO SUPPLY AND INSTALL       |
| PB2     |     | THREE-HOLE FAUCET                        | PLUMBING TRADE TO SUPPLY AND INSTALL       |
| PB3     |     | SINGLE-HOLE FAUCET                       | PLUMBING TRADE TO SUPPLY AND INSTALL       |
| PB4     |     | WALL-HUNG BATHROOM SINK                  | PLUMBING TRADE TO SUPPLY AND INSTALL       |
| PB5     |     | WALL-HUNG HAND SINK                      | PLUMBING TRADE TO SUPPLY AND INSTALL       |



1 SITE PLAN  
NTS



2 KEY PLAN  
NTS



3 EXISTING LAYOUT  
3/16"=1'-0"

