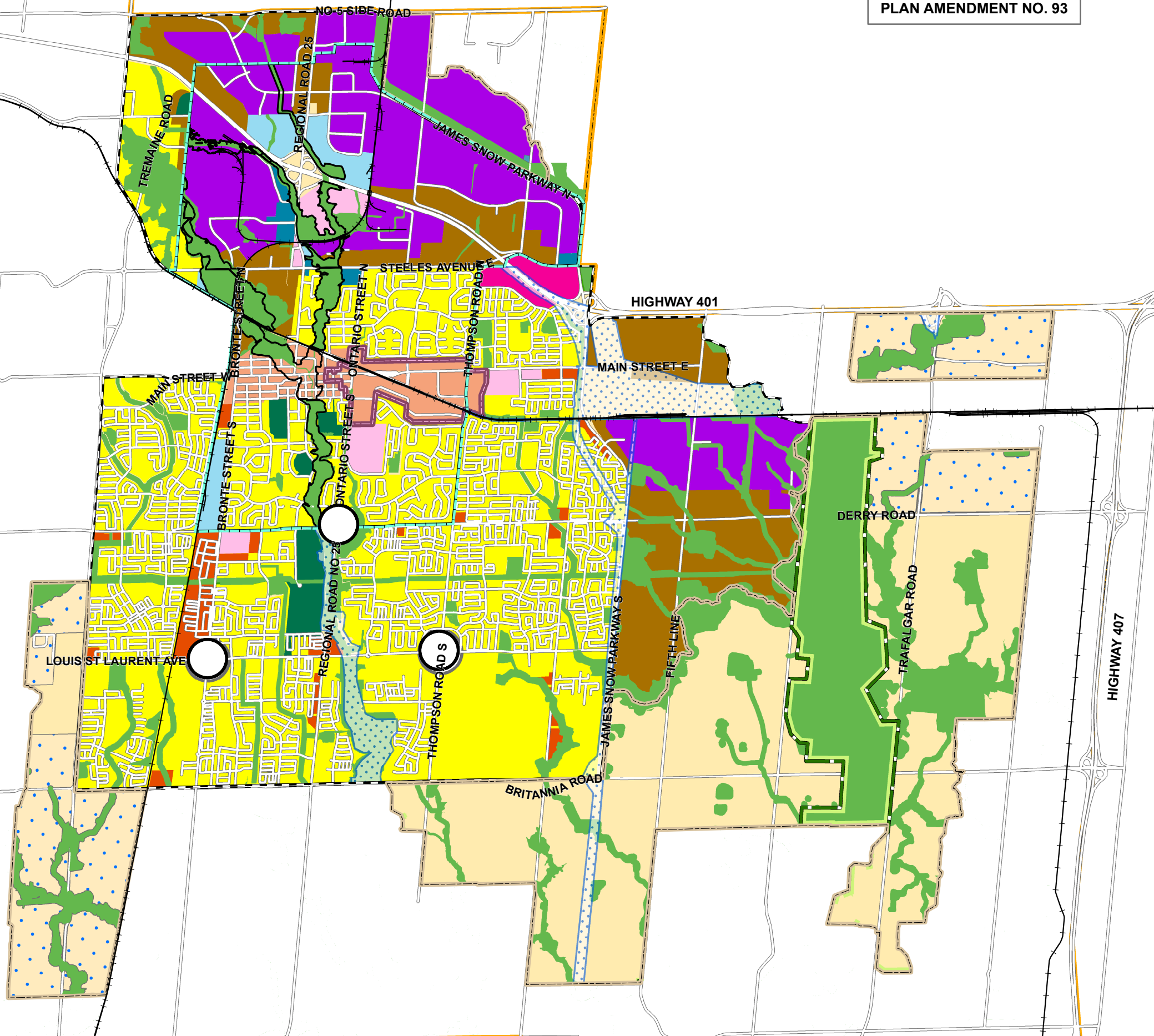


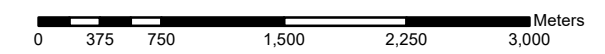
TOWN OF MILTON OFFICIAL PLAN

Schedule B Urban Area Land Use Plan

SCHEDULE '1' TO OFFICIAL
PLAN AMENDMENT NO. 93



- Business Park Area
- Business Commercial Area
- Central Business District
- Community Park
- SHP Growth Area
- SHP Growth Area- Employment
- Industrial Area
- Institutional Area
- Office Employment Area
- Major Commercial Centre
- Residential Area
- Residential Office Area
- Secondary Mixed Use Node
- Natural Heritage System
- Milton GO MTSA/Downtown Milton UGC
- Greenbelt Plan Protected Countryside
- Parkway Belt West Plan Area
- Regulatory Flood Plain
(Within Established Urban Area)
- SHP Urban Area Boundary
- Established Urban Area Boundary
- HUSP Urban Area Boundary
- Milton Boundary



This schedule forms part of the Official Plan
and should be read in conjunction with the text.

Copyright 2025: Town of Milton, Teranet Inc.

August, 2025