



Table 1: Heritage Attributes of the Hogg House (22 King Street), Milton, Ontario

Heritage Attribute

Gothic Revival style composition with three-bay, storey-and-a-half massing.



Photograph



Heritage Attribute

Medium side gable roof with central cross-gable

Photograph



Heritage Attribute



Photograph

Stone chimneys with chamfered caps inside both end walls



Load-bearing walls built in chiselled ashlar masonry laid in regular courses



| Heritage Attribute | Photograph |
|---|---|
| <p>Wood frieze with nebuly or nebulé moulding</p> |  <p>A photograph showing a close-up of a stone wall under a white roofline. A decorative wood frieze with a nebuly or nebulé pattern is visible along the eaves. A window with a white frame is partially visible to the right.</p> |
| <p>Window opening in the cross-gable with semi-circular arch head formed with small stone voussoirs</p> |  <p>A photograph of a window set within a cross-gable roof structure. The window has a semi-circular arch head, which is constructed from small, light-colored stone voussoirs. The wall is made of larger, rough-hewn stone blocks.</p> |

Heritage Attribute

Symmetrical fenestration on the front façade and end walls defined by plain stone lug sills and heavy stone lintels that are bush hammered with chiselled margins



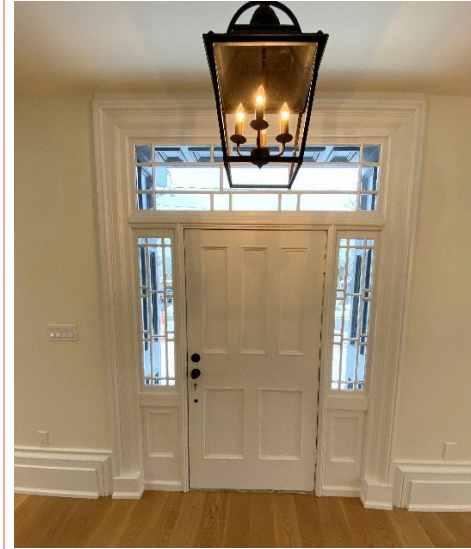
Photograph

Heritage Attribute

Wide central entrance with interior and exterior multi-pane transoms and sidelights and wood five-panel door



Photograph



Heritage Attribute

Interior, first level architraves at the central entrance and windows that include full-wall height moulding and panelling and twisted cord beading



Photograph

