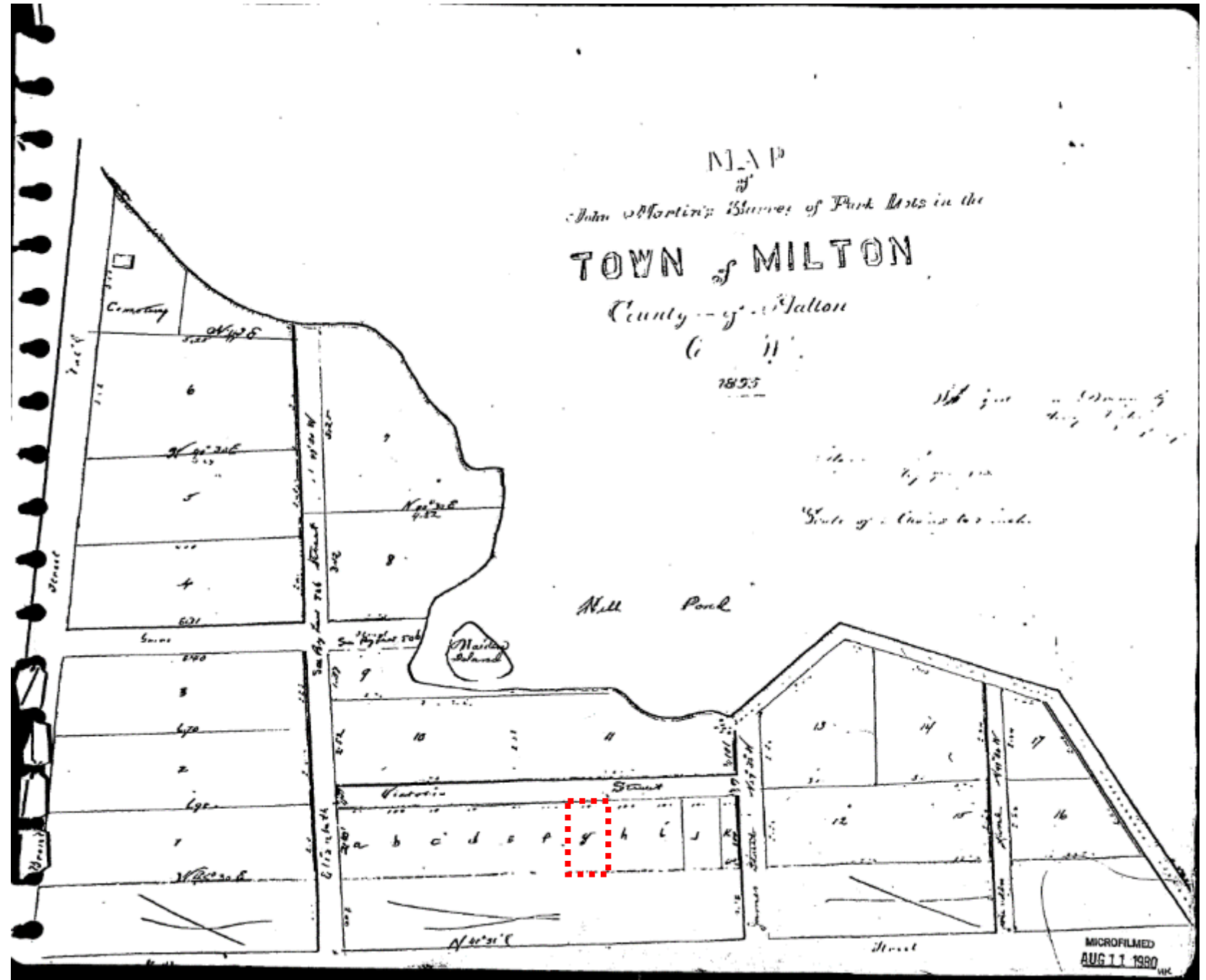




Appendix 3
Photographic Record _ Heritage Attributes _ 94 Victoria Street

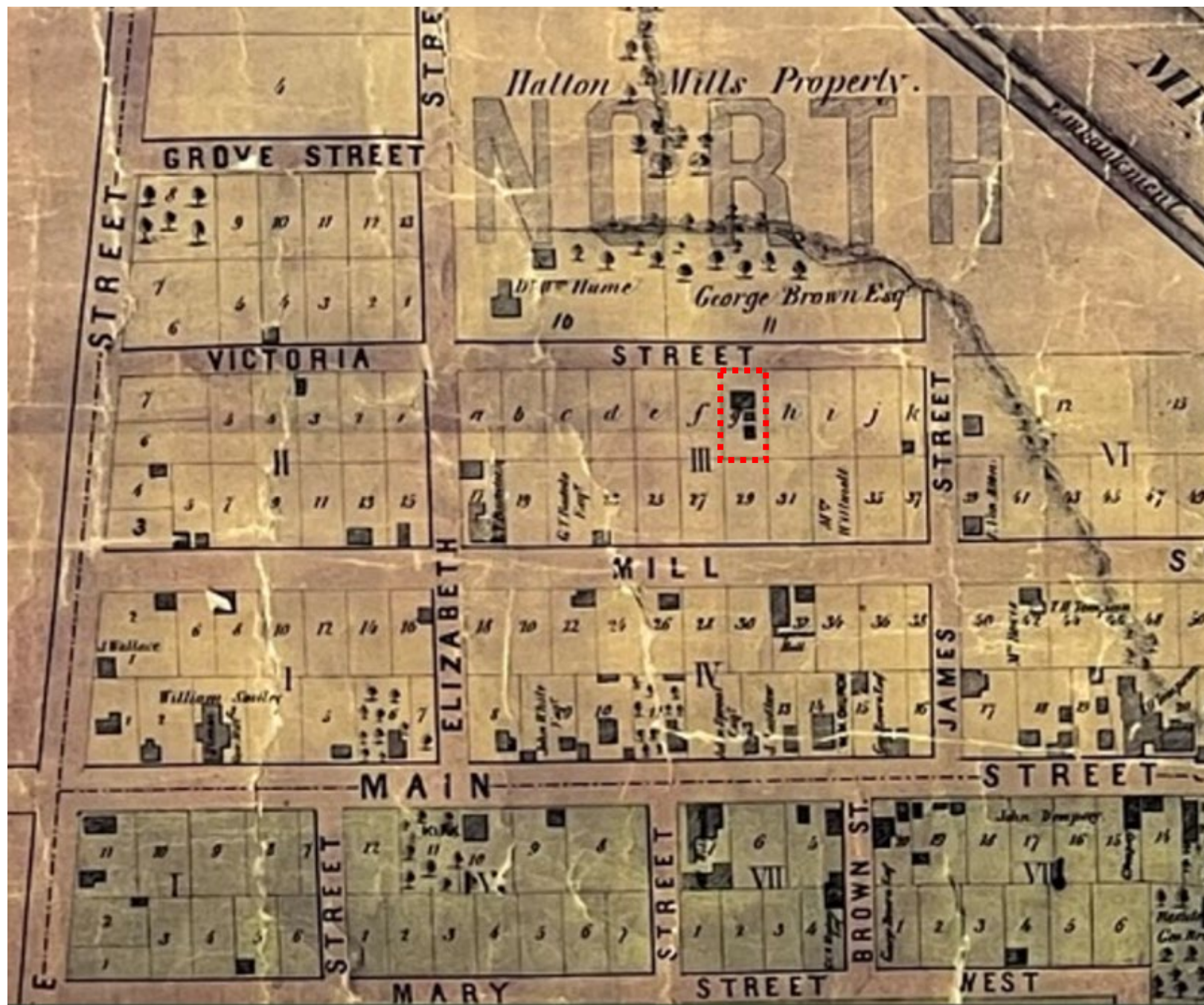
Contextual Heritage Attributes

- Contextually, it is one of the earliest houses built in the John Martin Survey (Lot G, Plan No.17) in 1855. This was one of the very early subdivisions in Milton that were created even before Milton was incorporated as a Town in 1857.



Contextual Heritage Attributes

- Location of House shown in the Map of the Town of Milton, County of Halton, Canada West, T.C. Livingston P.L.S. 1858



Heritage Award 1996

Winner of the "Conservation Work done to a Non-Designated Property" category.



January 26, 1996

Mr. and Mrs. D. Corker
94 Victoria Street
Milton, Ontario
L9T 1S7

Dear Mr. and Mrs. Corker:

On behalf of Heritage Milton (LACAC), I wish to congratulate you for being chosen as a Heritage Award Winner in the category of "Conservation Work Done to a Non-Designated Property". You are invited to attend the Milton Heritage Awards ceremony on Sunday, February 18th, 1996 at High Foster Hall. The Heritage Awards Day will include a walking tour of Victoria Square at 1:30 p.m. followed by the awards ceremony at 2:15 p.m.

As part of this year's ceremony, we are asking all award winners to set up a tabletop display and to give a five minute talk about their winning project. Your speech could include:

- . why the project was undertaken
- . obstacles you may have had to overcome
- . interesting findings, light hearted moments
- . what you learned, acknowledgements, etc.

Please contact me at 854-9989 or 878-2133 (daytime) to confirm your participation for the Awards Day and to discuss preparations. We would also like to strongly encourage architectural award winners to bring before and after photos for display.

The high quality of the historical projects completed by this year's award winners in all categories promises to make this ceremony a very special event. Thank you for your contribution to teaching this generation and future generations about the accomplishments and sacrifices of our ancestors.

Sincerely,

Dorrie Murdoch-Greig, for
Heritage Milton (LACAC)
Coordinator Architectural Awards
1995 Milton Heritage Awards

Historical Books

HALTON COUNTY (20), TRAFALGAR, Plan 17

4 August 1856

George Brown Wife to Jane McCann

18 June 1879

Jane McCann to Hepzibah Bastedo

Lot G

\$1,550

LOT G

SOUTH EAST
OF VICTORIA
ST.

PLAN 17

PAGE ..1.....

INSTRUMENT	DATED	REGISTERED	FROM	TO	ACBR	DESCRIPTION, etc.
483 G B-7 Sale	4 Aug 1856	31 Aug 1856	George Brown wife	Jane M ^c Cann	15-	Lot G
484 Mortgage	14 Aug 1856	31 Aug 1856	Jane M ^c Cann	William Willmott Thomas Brown & George Brown, Associates of Alexander M ^c Cann	15-	
255 Certificate of Trust	26 March 1860	29 March 1860	William Willmott and Thomas Brown, Survivors of George Brown, deceased	Jane M ^c Cann	15-	
1398 B-7 Sale	18 June 1879	July 1879	Jane M ^c Cann (Relict of Alexander M ^c Cann)	Hepzibah Bastedo (Relict of Jacob Bastedo)	15-	Lot G, waterland
1389 Mortgage	12 June 1879	July 1879	Hepzibah Bastedo, widow	Jane M ^c Cann, widow	15-	Lot G. \$1,550.

Existing Location_ 94 Victoria_ Jane McCann House



Historical Heritage Attributes

- Home of Jane McCann, 1856

94 VICTORIA STREET

Lot G
John Martin Park, Plan 17
Built about 1856



A brick Regency Cottage, this home has distinctive brick pilasters at the windows and corners. The hipped roof has deep eave trim; tall windows are characteristic of the style. Originally nearly square in plan with a small ell at the rear, this house has been substantially enlarged without overwhelming the original historic building.

five children, Elizabeth, studied painting in Paris, France, later becoming a professional artist and well-known teacher in Milton. Elizabeth Bastedo was active in St. Paul's Church and its Sunday School for 65 years.

David Hornell purchased this cottage in 1920; three years later it became home to his son, James and his wife, Leo Annie (Liddle). They raised their family here and Leo remained for decades following her husband's death, her friendliness making her well-known to countless people in the com-

munity. Leo was a member of the Rebekah Lodge, which celebrated its 95th anniversary in April 2000.

In recent years the building has undergone substantial changes, beginning with Pamela King, who owned the property until the mid-1990s.

The present owners are Don and Ann Corker, formerly of Campbellville. After buying the house from Pamela they carried out extensive renovations to the entire structure and added an addition at the rear before moving in.

LACAC Heritage Inventory Description

MILTON L.A.C.A.C. HERITAGE INVENTORY	
BUILDING TYPE: Residential	INVENTORY #:
ADDRESS: 94 Victoria St.	
BUILDING NAME:	
ORIGINAL USE: Housing	CONSTRUCTED:
PRESENT USE: Housing	
DESIGNATION:	DATE:
HISTORY	
This house was most likely built in the early 1850's for Jane McCann.	
ARCHITECTURAL COMMENTS	
<p>WALLS: A single one storey brick house with four bays, panels and a chimney.</p> <p>ROOF: A medium hip roof with projecting eaves, plain fascia and soffit.</p> <p>WINDOWS: Tall windows with flat heads, wooden sashes, stone lug sills.</p> <p>DOORWAYS: Central doorway with wood trim, single light transom, single door with four panels and glass.</p> <p>PORCHES: Single step.</p>	
OTHERS:	

Physical Heritage Attributes

- The original three bay one story historic house with low-hip roof, square plan with rubble stone wall foundation.



Historical House 2006



View along Victoria Street, 2020



View along Victoria Street, 2022



Elevation along Victoria Street, 2023



View along Victoria Street, 2023



View Along Victoria Street, 2023

Physical Heritage Attributes

- The original three bay one story historic house with low-hip roof, square plan with rubble stone wall foundation.



Backyard



South (Rear) Elevation showing additions



South Elevation (1995 additions)



West Elevation (1995 additions)



West Elevation (Original)



East Elevation (Original and Addition Interface)

- **Physical Heritage Attributes**

Centre porch entrance with deep eave trim, decorative frieze and plain soffit, double plain wood posts with decorative motifs



Centre Porch Entrance



Decorative Motifs Details



Double Plain Wood Post

Physical Heritage Attributes

Single Leaf Four Panels Door with rectangular transom



Central Entrance door



Rectangular transom above door



Single Leaf Four Panels Door with glass inserts

Physical Heritage Attributes

- Pug (hand pressed) bricks laid in a Flemish bond on the front façade with common bond being used on its less prominent sides and unique brick pilasters between windows.



Flemish Bond



Brick Pilasters

Running Bond

Physical Heritage Attributes

- Large double sash, six over six windows with stone lug sills



East Elevation Windows



West Elevation Window



Front Elevation Window



West Elevation Window