



Appendix 3

Photographic Record \_ Heritage Attributes \_ 10266 2nd Line, Campbellville



Location Map\_10266 2nd Line, Campbellville

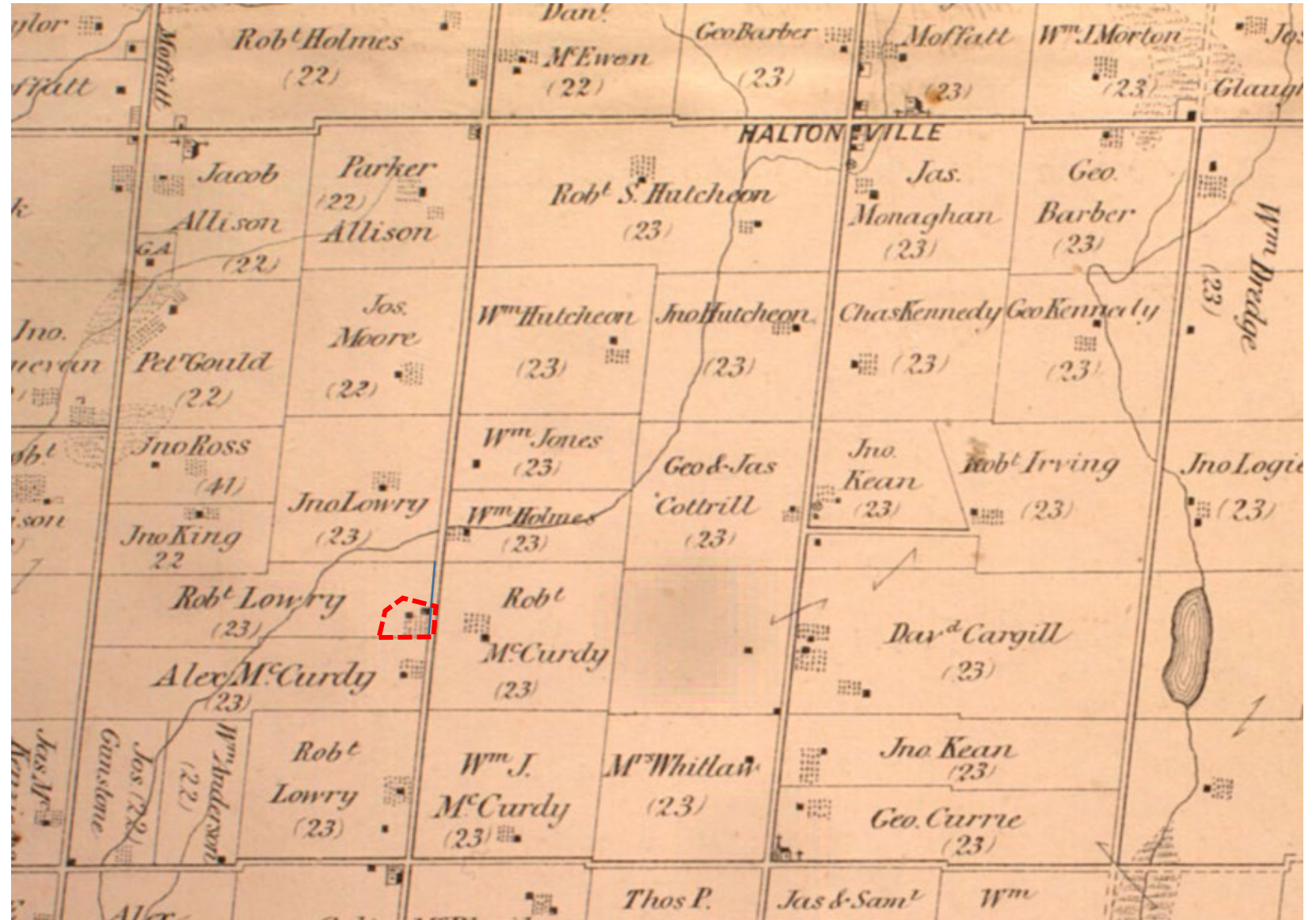
## Contextual Attributes

Context of the location of the original house contributing to the heritage character of Haltonville, as shown in the 1877 Historical Atlas of Halton

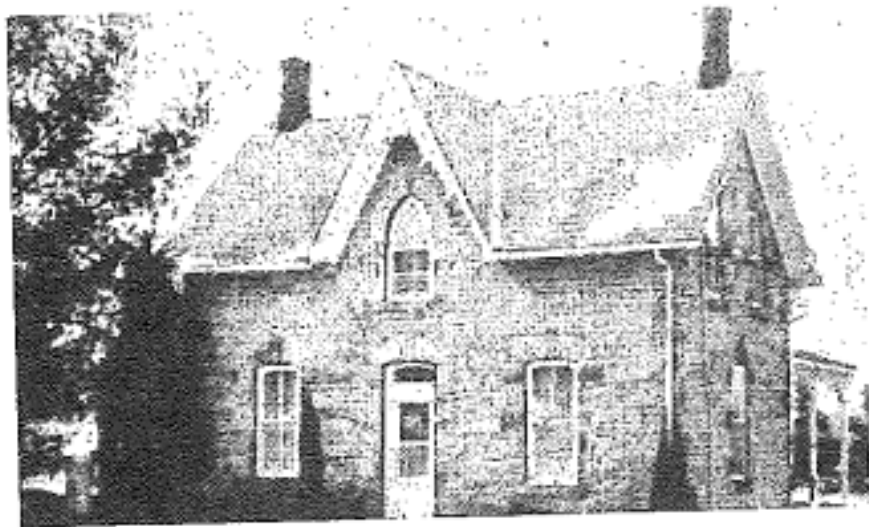
**NASSAGAWEYA**

**CON 2 PT LOT 12**

**RP 20R3964 PART 1**



Map of Nassagaweya Historical Atlas of Halton County Ontario Illustrated Walker and Miles Toronto 1877 Map



Home of Mac and Jane Trass circa 1951

MILTON L.A.C.A.C. HERITAGE INVENTORY	
<b>BUILDING TYPE:</b> Rural Residential	<b>INVENTORY #:</b>
<b>ADDRESS:</b> 10266 2nd Line (Nassagaweya)	
<b>BUILDING NAME:</b> Elderstone	
<b>ORIGINAL USE:</b> Residential	<b>CONSTRUCTED:</b>
<b>PRESENT USE:</b> Residential	
<b>DESIGNATION:</b>	<b>DATE:</b>
HISTORY	
<p>Robert Lowrey built this stone house around 1890. His son James received the land next. The farm remained in the Lowrey family from 1868 until 1928. The previous land owners, the Andersons, had two log houses on the property before the stone one was built.</p>	
ARCHITECTURAL COMMENTS	
<p><b>WALLS:</b> A storey and a half house of broken course cut stone with a smoothed finish, three bays and two interior side chimneys.</p> <p><b>ROOF:</b> A medium gable roof of cedar shingles with a centre gable, gingerbread trim, plain projecting eaves..</p> <p><b>WINDOWS:</b> Segmental double hung windows with wood trim, stone voussoirs, keystone and stone lug sills.</p> <p><b>DOORWAYS:</b> A centre doorway with a segmental shape, transom, wood trim and a single leaf of panels and glass.</p> <p><b>PORCHES:</b> A stone landing with a front approach step.</p> <p><b>OTHERS:</b></p>	

# Historical Book Record

Land Registry Office  
 Halton County (LRO 20)  
 Nassagaweya Book 2  
 Concession 2  
 Part Lot 12 and  
 RP 20R3964 Part 1

LOT 12 CONCESSION 2 NASSAGAWEYA

REGISTRATION NUMBER	INSTRUMENT	DATE OF INSTRUMENT	REGISTRATION DATE	GRANTOR	GRANTEE	CONSIDERATION ETC.	LAND AND REMARKS
	Patent	30 Jan 1856		Crown	William McCurdy		100 ac. SE $\frac{1}{2}$
	Patent	06 Mch 1860		Crown	Joseph Anderson		100 ac. N $\frac{1}{2}$
694 B	B & Sale	21 Oct 1862	20 Nov 1862	Joseph Anderson & wife	Robert Anderson		100 ac. N $\frac{1}{2}$ on certain conditions
708 B	Will	21 Oct 1862	27 Dec 1862	Joseph Anderson			
472 C	B & Sale	12 Aug 1868	13 Aug 1868	Robert Anderson & wife	Robert Lowry		100 ac. N $\frac{1}{2}$ Subj. to 2 indentures dated 21 Oct., 1862
918 E	B & Sale	10 May 1875	11 May 1875	William McCurdy, widower	Alexander McCurdy	\$3,000.	100 ac. with reservation to party of 1st part.
2725 I	Deed	22 Sep 1887	09 Dec 1887	Robert Lowrey & wife	The Guelph Junction Railway Co.	\$152.	1 96/100 ac. Pt. NW $\frac{1}{2}$ of W $\frac{1}{2}$
2726 I	Deed	06 Dec 1887	09 Dec 1887	Alexander McCurdy,	The Guelph Junction Railway Co.	\$425.	1 85/100 ac. Pt. SE $\frac{1}{2}$ of W $\frac{1}{2}$

FORM A-3

# Physical Heritage Attributes

One and a half Gothic Revival Stone home with medium cross gable, two dormers and two brick chimneys



North Elevation



South Elevation



East Elevation



West Elevation



South Elevation



East Elevation Extension

- **Physical Heritage Attributes**

- Two Sash, two-over-two segmented arch windows with plain mouldings, heavy stone arch lintel with keystone and plain lug stone sills
- Gothic pointed arch lancet windows at centre gable ends at North and West window with stone lug sill and pointed arch lintels with keystone.



Ground Floor Window North elevation



Central Gable Window North Elevation



Ground Floor Window North elevation

## Physical Heritage Attributes

- Two Sash, two-over-two segmented arch windows with plain mouldings, heavy stone arch lintel with keystone and plain lug stone sills
- Gothic pointed arch lancet windows at centre gable ends at North and West window with stone lug sill and pointed arch heavy stone lintels with keystone.



Windows West Elevation Upper Floor



West Elevation



Window West Elevation  
Porch



Window West Elevation  
Central Gable



Windows West Elevation  
Ground Floor



## Physical Heritage Attributes

Two Sash, two-over-two segmented arch windows with plain mouldings, heavy stone arch lintel with keystone and plain lug stone sills



South Elevation



South Elevation Ground Floor Windows



South Elevation upper Floor Window

## Physical Heritage Attributes

Two Sash, two-over-two segmented arch windows with plain mouldings, heavy stone arch lintel with keystone and plain lug stone sills



East Elevation



East Elevation Windows



East Elevation Windows upper Floor Window

## Physical Heritage Attributes

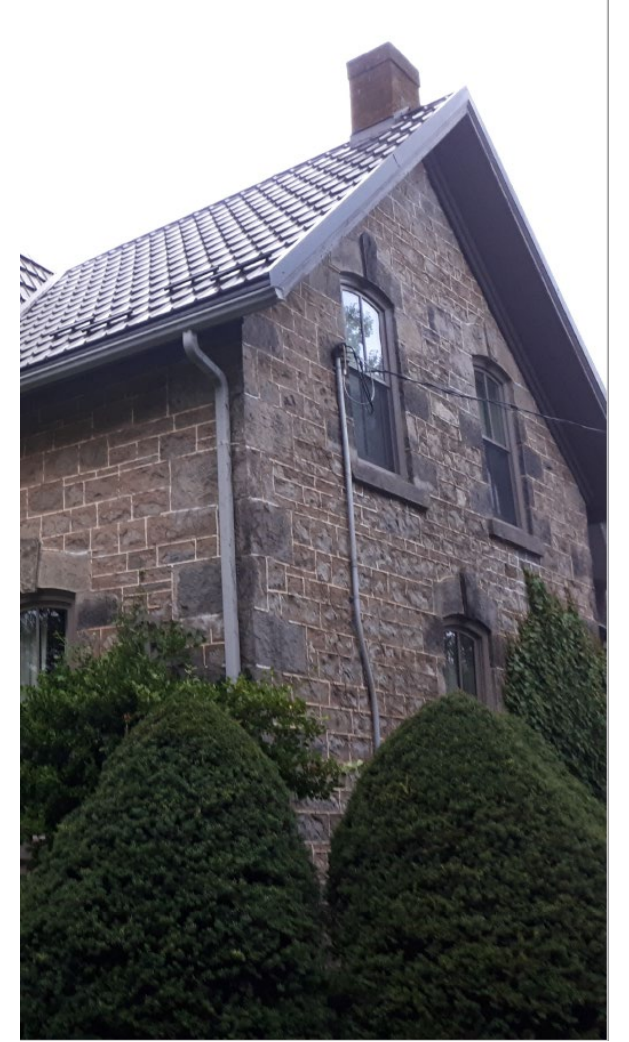
A left side brick chimney at the West elevation and an exterior rear brick chimney on the South elevation



Chimney South Elevation



Chimney South Elevation



Chimney West Elevation

## Physical Heritage Attributes

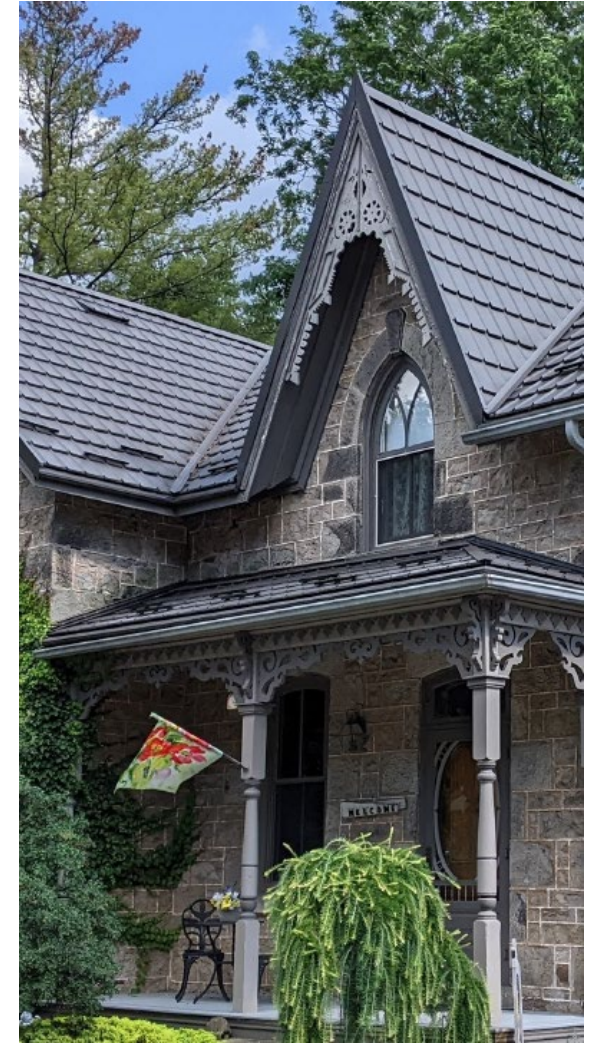
Decorative verges or ginger bread on the central gable of the North and West elevations



Decorative Verges on the North Elevation



Verges Details



Decorative Verges on the West Elevation

# Physical Heritage Attributes

Open ornate side porch with straight steps, decorated timber post and fretworks



Decorative post and fretworks



Decorative fretworks and window



Side Entrance Porch Door



Side Entrance Porch West Elevation

## Physical Heritage Attributes

- Broken course cut stone on exterior of building with quins at corners at North, East and West elevation
- Random course field stone at South elevation



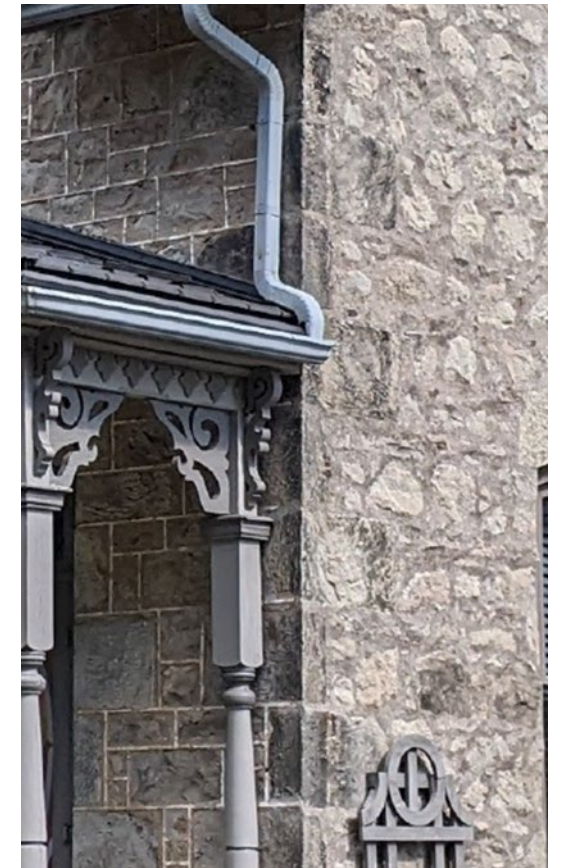
North East Corner



North West Corner



West Elevation at Porch



South West Corner

## Physical Heritage Attributes

Random Course field stone at interior interface of historical home and new additions



Interface Historic house and addition



Interior Interface Historic house and addition



## Physical Heritage Attributes

- Single leaf three-panel wood entrance door with stain glass insert on the middle panel, clear segmented arch transom and heavy stone lintel at North Elevation
- Single leaf three-panel wood entrance door clear segmented arch transom and heavy stone lintel at West Elevation



Door on North Elevation



Door on West Elevation



Stain Glass Insert Detail



# Non Heritage Attributes

Additions to the south of the property



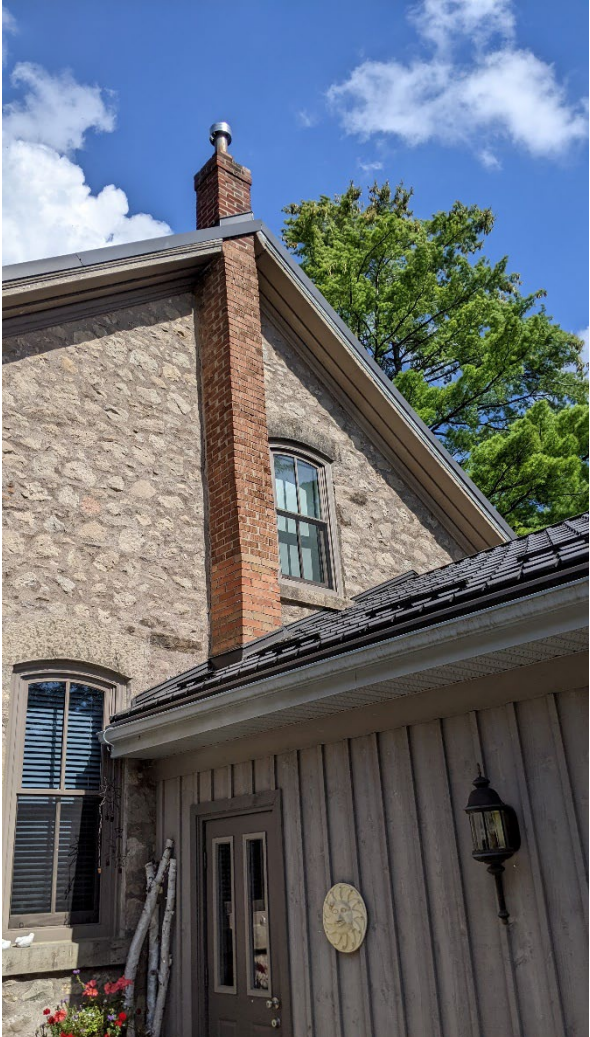
Rear Extension



Rear Extension (side elevation)



Rear Sunroom Addition



Rear Brick Chimney?