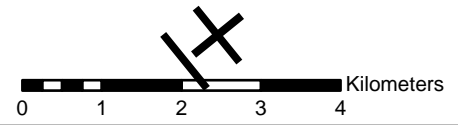


**SCHEDULE '14' TO OFFICIAL
PLAN AMENDMENT NO. 83**

**TOWN OF MILTON
OFFICIAL PLAN**

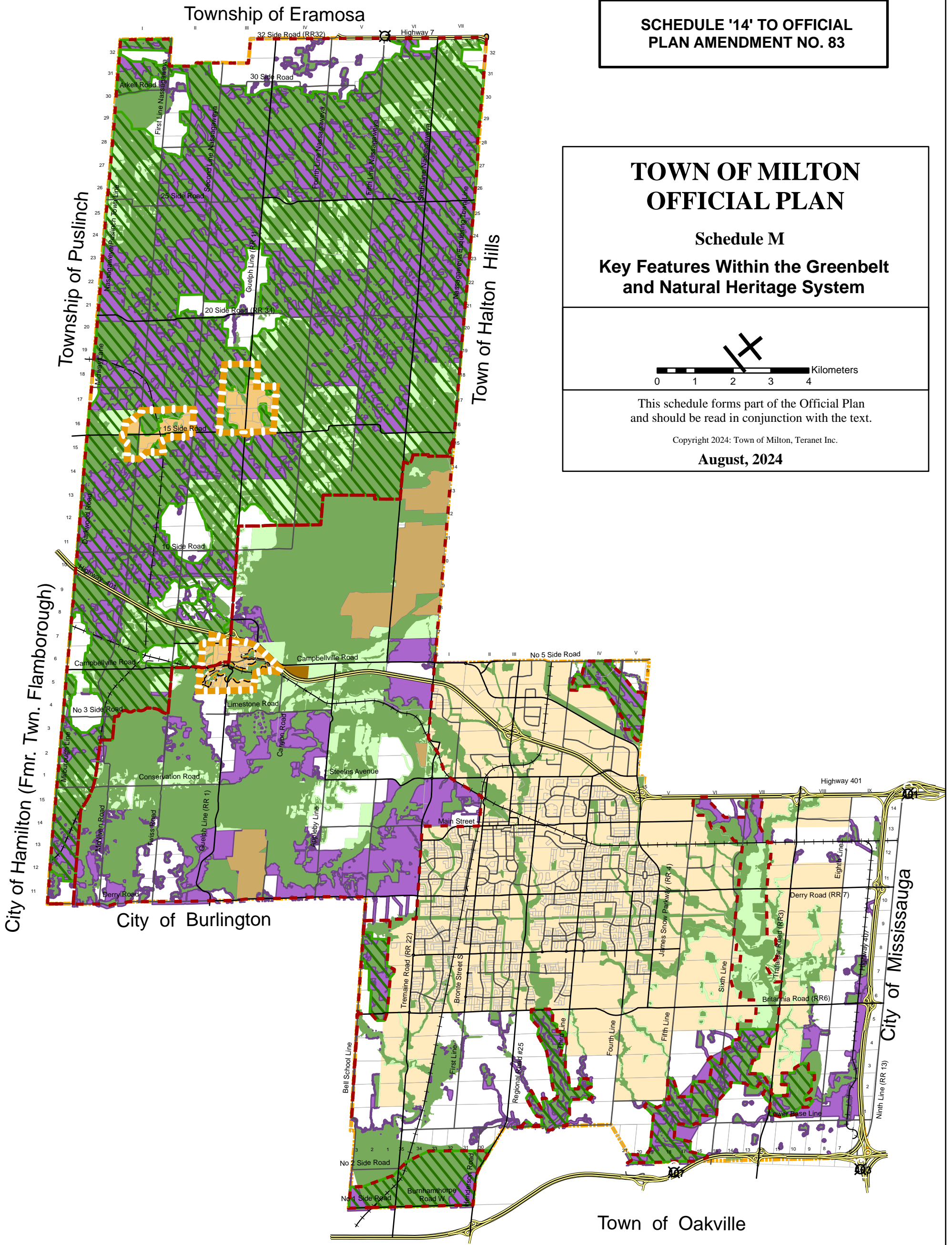
**Schedule M
Key Features Within the Greenbelt
and Natural Heritage System**






This schedule forms part of the Official Plan
and should be read in conjunction with the text.

Copyright 2024: Town of Milton, Teranet Inc.

August, 2024



- | | | | | | |
|--|--|---|--------------------------------------|---|----------------------|
|  | NHS KEY FEATURES |  | MINERAL RESOURCE EXTRACTION AREA |  | LOTS AND CONCESSIONS |
|  | ENHANCEMENT AREAS, LINKAGES, AND BUFFERS |  | GREENBELT NATURAL HERITAGE SYSTEM |  | MUNICIPAL BOUNDARY |
|  | AGRICULTURAL AREAS IN NHS ENHANCEMENTS/ LINKAGES/BUFFERS |  | GREENBELT PLAN PROTECTED COUNTRYSIDE |  | HAMLETS |