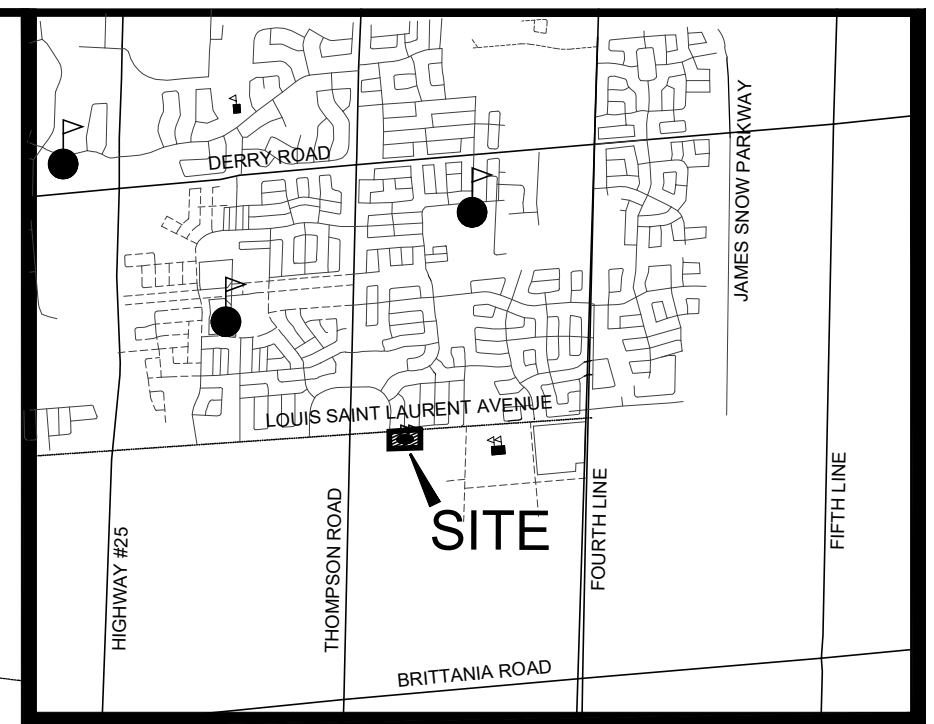


DS-063-24
FIGURE 4



KEY PLAN N.T.S.

DRAFT PLAN OF SUBDIVISION 24T-XXXXXX

PART OF LOT 8, CONCESSION 4
GEOGRAPHIC TOWNSHIP OF TRAFALGAR
TOWN OF MILTON
REGIONAL MUNICIPALITY OF HALTON

SCALE 1:750
METRIC
DISTANCES SHOWN ON THIS PLAN ARE IN METERS AND CAN BE CONVERTED TO FEET BY DIVIDING BY 0.3048

ADDITIONAL INFORMATION REQUIRED BY CLAUSES SECTION 51(17) OF THE PLANNING ACT.

- A - SHOWN ON PLAN
- B - SHOWN ON PLAN
- C - SHOWN ON PLAN
- D - SHOWN ON PLAN
- E - SHOWN ON PLAN
- F - SHOWN ON PLAN ACCOMPANYING THIS DRAFT PLAN APPLICATION
- G - SHOWN ON PLAN
- H - MUNICIPAL PIPED WATER
- I - CLAYEY SILT
- J - SHOWN ON PLAN
- K - MUNICIPAL SANITARY & STORM SEWERS
- L - NONE

OWNER'S CERTIFICATE:

I HEREBY AUTHORIZE THE FIRM OF STRATEGY4 INC. TO PREPARE AND SUBMIT THIS DRAFT PLAN TO THE TOWN OF MILTON FOR APPROVAL.
HALTON CATHOLIC DISTRICT SCHOOL BOARD
802 DRURY LANE - BURLINGTON, ON L7R 2Y2
SIGNATORY (AARON LOFTS)
SIGNATURE DIGITIZED WITH EXPRESS WRITTEN CONSENT OF SIGNATORY
SIGNATURE VALID FOR THIS PLAN ONLY

Aaron Lofts June 12, 2024 DATE

SURVEYOR'S CERTIFICATE:

I HEREBY CERTIFY THAT THE BOUNDARIES OF THE LANDS TO BE SUBDIVIDED AS SHOWN ON THIS PLAN AND THEIR RELATIONSHIP TO THE ADJACENT LANDS ARE ACCURATELY AND CORRECTLY SHOWN.

Roy C. Mackay June 11, 2024 DATE
ON-PROVINCIAL SUPERVISOR FOR: MACKAY, MACKAY & PETERS LIMITED

SCHEDULE OF LAND USE

PROPOSED LAND USE	REFERENCE	(sq.m.±)	(Ac.±)
ELEMENTARY SCHOOL	BLOCK 1	43,875.55	10.842
SERVICING BLOCK	BLOCK 2	3,263.88	0.807
NHS BUFFER W/ TRAIL	BLOCK 3	1,201.66	0.297
NHS BLOCK	BLOCK 4	1,367.60	0.338
SERVICING BLOCK	BLOCK 5	139.04	0.034
NHS BUFFER W/ TRAIL	BLOCK 6	1,805.08	0.446
NHS BLOCK	BLOCK 7	1,960.56	0.484
TOTAL SITE AREA		53,613.37	13.248

DATE	DESCRIPTION	BY
JUN 13/24	ISSUED FOR DRAFT PLAN OF SUBDIVISION AND RE-ZONING APPLICATION RE-SUBMISSION	3. JK
NOV 23/23	ISSUED FOR DRAFT PLAN OF SUBDIVISION AND RE-ZONING APPLICATIONS	2. JK
MAY 24/23	ISSUED TO SUPPLEMENT MAY 9TH, 2023 PRE CON SUBMISSION TO TOWN OF MILTON	1. JK
DATE	DESCRIPTION	BY
DATE	DESCRIPTION	BY

FUTURE RESIDENTIAL
AS PER DWG. NO. 19:5, PROJECT NO. P-2181
BY KLM, DATED NOV. 18, 2019

FUTURE RESIDENTIAL
AS PER DWG. NO. 19:5, PROJECT NO. P-2181
BY KLM, DATED NOV. 18, 2019

FUTURE RESIDENTIAL
AS PER DWG. D
DRAFT PLAN OF SUBDIVISION
FILE 24T-22001/M, BY
KORSIAK URBAN PLANNING
LATEST REV. FEB. 24, 2023

Strategy 4
Development Consulting
Urban Transformation
Urban Design
Urban Works

2620 Bristol Circle, Suite 100
Oakville, ON L6H 6Z7
t: (905) 829-2544

Drawn By: ML
Checked By: JK/DT
Job No.: S42898
File Name: 2898DPS